

DABCE Product Catalogue

Peristaltic Pumps



At DABCE we work with high-tech solutions to help save our planet. Our dedicated team work daily with our customers to meet new demands placed in today's industry.

We use engineering excellence combined with a solution focus and a large amount of passion to identify the best solutions to present and future challenges.

You are always welcome to contact us.

Email us: contact@dabce.se

Call us: +46761913646

Peristaltic Pumps



Flow \leq 50 ml/min

Serie: DBC-PU-00001



Flow \leq 60 ml/min

Serie: DBC-PU-00002



Flow \leq 71.5 ml/min

Serie: DBC-PU-00003



Flow \leq 85 ml/min

Serie: DBC-PU-00004



Flow \leq 88 ml/min

Serie: DBC-PU-00005



Flow \leq 90 ml/min

Serie: DBC-PU-00006



Flow \leq 110 ml/min

Serie: DBC-PU-00007



Flow \leq 122 ml/min

Serie: DBC-PU-00008



Flow \leq 300 ml/min

Serie: DBC-PU-00009



Flow \leq 420 ml/min

Serie: DBC-PU-00010

Peristaltic Pumps Serie: DBC-PU-00001



Features

DC motor, 6V/12V/24V
Flow range: ≤ 50 ml/min
Small size, maintenance-free
4W low power

Specifications

| Item | Technical Parameters |
|----------------|----------------------|
| Motor type | DC brush motor |
| Flow range | ≤ 50 ml/min |
| Power | 4W |
| Control method | On-off control |
| Weight | ≈ 60 g |
| Rated voltage | 6V/12V/24V |
| Tube life | S-200H |

Pump flow

| Item | Flow for reference (ml/min) |
|---------------|--|
| Tube code | SI_2x4 |
| ID x OD | 2.0 x 4.0 |
| Tube material | Silicone tube |
| D6-D12-D24 | 50ml/min |
| Noise | Under the ambient noise of 40dB, measured at a distance of 50cm ≤ 55 dB |

The data above was measured in a lab at standard conditions. To be used as reference values only, variations may occur

| Article number | Description |
|-------------------------------|--|
| DBC-PU-00001-DC6V-C60-SI_2x4 | Peristaltic Pump, 6V, <50 ml/min, blue, silicone tube 2x4mm |
| DBC-PU-00001-DC12V-C60-SI_2x4 | Peristaltic Pump, 12V, <50 ml/min, blue, silicone tube 2x4mm |
| DBC-PU-00001-DC24V-C60-SI_2x4 | Peristaltic Pump, 24V, <50 ml/min, blue, silicone tube 2x4mm |

Peristaltic Pumps Serie: DBC-PU-00002



Features

6V/12V/24V DC motor
Flow range: ≤ 60 ml/min
Planetary friction reduction transmission
Wall thickness 1.0mm pump tubing

Specifications

| Item | Technical Parameters |
|----------------|----------------------|
| Motor type | DC brush motor |
| Flow range | ≤ 60 ml/min |
| Power | 5W |
| Control method | On-off control |
| Weight | ≈ 100 g |
| Rated voltage | 6V/12V/24V |
| Tube life | BPT-1000H; S-200H |
| Motor life | ≥ 800 H |

Pump flow

| Item | Flow for reference (ml/min) |
|---------------|--|
| Tube code | SI_2x4 |
| ID x OD | 2.0x4.0 |
| Tube material | Silicone tube |
| D6-D12-D24 | 50ml/min |
| Noise | Under the ambient noise of 35dB, measured at a distance of 50cm ≤ 50 dB |

The data above was measured in a lab at standard conditions. To be used as reference values only, variations may occur

Article number

Description

| | |
|-------------------------------|---|
| DBC-PU-00002-DC6V-C60-SI_2x4 | Peristaltic Pump, 6V, <60 ml/min, blue |
| DBC-PU-00002-DC12V-C60-SI_2x4 | Peristaltic Pump, 12V, <60 ml/min, blue |
| DBC-PU-00002-DC24V-C60-SI_2x4 | Peristaltic Pump, 24V, <60 ml/min, blue |
| DBC-PU-00002-DC6V-C20-SI_2x4 | Peristaltic Pump, 6V, <60 ml/min, black |
| DBC-PU-00002-DC12V-C20-SI_2x4 | Peristaltic Pump, 12V, <60 ml/min, black |
| DBC-PU-00002-DC24V-C20-SI_2x4 | Peristaltic Pump, 24V, <60 ml/min, black |
| DBC-PU-00002-DC6V-C70-SI_2x4 | Peristaltic Pump, 6V, <60 ml/min, yellow |
| DBC-PU-00002-DC12V-C70-SI_2x4 | Peristaltic Pump, 12V, <60 ml/min, yellow |
| DBC-PU-00002-DC24V-C70-SI_2x4 | Peristaltic Pump, 24V, <60 ml/min, yellow |
| DBC-PU-00002-DC6V-C40-SI_2x4 | Peristaltic Pump, 6V, <60 ml/min, green |
| DBC-PU-00002-DC12V-C40-SI_2x4 | Peristaltic Pump, 12V, <60 ml/min, green |
| DBC-PU-00002-DC24V-C40-SI_2x4 | Peristaltic Pump, 24V, <60 ml/min, green |

Peristaltic Pumps Serie: DBC-PU-00003



Features

- 24V stepper motor
- Flow range ≤ 71.5 ml/min
- Suitable for viscous and non-viscous liquid transfer
- High reliability, low noise, long life

Specifications

| Item | Technical Parameters |
|----------------|----------------------|
| Motor type | Stepper motor |
| Flow range | ≤ 71.5 ml/min |
| Power | 20W |
| Control method | Stepper driver |
| Weight | ≈ 235 g |
| Rated voltage | 12V/24V |
| Tube life | BPT-1000H; S-200H |
| Motor life | ≥ 6000 H |

Pump flow

| Item | Flow for reference (ml/min) | | | | | |
|---------------|--|---------|----------|----------|----------|-------------|
| Tube code | SI_1x3 | SI_2x4 | SI_2.5x4 | SI_3x5 | BPT_1x3 | BPT_1.5x3.5 |
| ID x OD (mm) | 1.0x3.0 | 2.0x4.0 | 2.5x4.0 | 3.0x5.0 | 1.0x3.0 | 1.5x3.5 |
| Tube material | Silicone tube | | | | | BPT |
| SE/SF-1.2A | 12 | 27 | 44-08-01 | 71-05-01 | 24-11-05 | 23 |
| Speed | 250 RPM | | | | | |
| Noise | Under the ambient noise of 35dB, measured at a distance of 50cm ≤ 53 dB | | | | | |

The data above was measured in a lab at standard conditions. To be used as reference values only, variations may occur

| Article number | Description |
|----------------------|--|
| DBC-PU-00003-C55-SI | Peristaltic pump, long life, 24V step motor, <72 ml/min, orange, silicone tube |
| DBC-PU-00003-C55-BPT | Peristaltic pump, long life, 24V step motor, <72 ml/min, orange, BPT tube |



Peristaltic Pumps Serie: DBC-PU-00004



Features

12V motor
Flow range: ≤ 85 ml/min
Suitable for viscous and non-viscous liquid transfer
High efficiency, gear transmission

Specifications

| Item | Technical Parameters |
|----------------|----------------------|
| Motor type | DC brush motor |
| Flow range | ≤ 85 ml/min |
| Power | 5W |
| Control method | On-off control |
| Weight | ≈ 90 g |
| Rated voltage | 12V |
| Tube life | S-200H |
| Motor life | ≥ 800 H |

Pump flow

| Item | Flow for reference (ml/min) |
|---------------|--|
| Tube code | SI_3x5 |
| ID x OD | 3.0x5.0 |
| Tube material | Silicone tube |
| 12V-0.35A | 85ml/min |
| Noise | Under the ambient noise of 35dB, measured at a distance of 50cm ≤ 60 dB |

The data above was measured in a lab at standard conditions. To be used as reference values only, variations may occur

Article number

DBC-PU-00004-DC12V-C60-SI

Description

Peristaltic Pump, 12V, < 85 ml/min, blue

Peristaltic Pumps Serie: DBC-PU-00005



Features

24V/12V stepper motor
 Flow range: ≤ 88 ml/min
 Suitable for viscous and non-viscous liquid transfer
 High reliability, low noise, long life

Specifications

| Item | Technical Parameters |
|----------------|----------------------|
| Motor type | Stepper motor |
| Flow range | ≤ 88 ml/min |
| Power | 20W |
| Control method | Stepper driver |
| Weight | ≈ 285 g |
| Rated voltage | 12V/24V |
| Tube life | BPT-1000H; S-200H |
| Motor life | ≥ 6000 H |

Pump flow

| Item | Tube code | Flow for reference (ml/min) | | | | |
|--------------|--|-----------------------------|------------|---------|---------|-------------|
| | | SI_2x4 | SI_2.5x4.5 | SI_3x5 | BPT_2x4 | BPT_2.5x4.5 |
| ID x OD (mm) | | 2.0x4.0 | 2.5x4.5 | 3.0x5.0 | 2.0x4.0 | 2.5x4.5 |
| | Tube material | Silicone tube | | | BPT | |
| 24V ST 1.2A | 3 rotors | 45 | 60 | 85 | 42 | 66 |
| | 6 rotors | 33 | 38 | 45 | 26 | 36 |
| 24V SU 1.2A | 3 rotors | 48 | 60 | 85 | 43 | 65 |
| | 6 rotors | 32 | 38 | 45 | 26 | 35 |
| Noise | Under the ambient noise of 35dB, measured at a distance of 50cm ≤ 65 dB | | | | | |

The data above was measured in a lab at standard conditions. To be used as reference values only, variations may occur

Article number

Description

| | |
|----------------------------|--|
| DBC-PU-00005-ST12V-C55-SI | Peristaltic Pump, 12V, < 88 ml/min, orange |
| DBC-PU-00005-ST24V-C55-SI | Peristaltic Pump, 24V, < 88 ml/min, orange |
| DBC-PU-00005-ST12V-C55-BPT | Peristaltic Pump, 12V, < 88 ml/min, orange |
| DBC-PU-00005-ST24V-C55-BPT | Peristaltic Pump, 24V, < 88 ml/min, orange |

Peristaltic Pumps Serie: DBC-PU-00006



Features

24V/12V/6V DC motor
 Flow range: ≤90ml/min
 Planetary friction reduction transmission
 Wall thickness 1.0mm pump tubing

Specifications

| Item | Technical Parameters |
|----------------|----------------------|
| Motor type | DC brush motor |
| Flow range | ≤ 90 ml/min |
| Power | 5W |
| Control method | On-off control |
| Weight | ≈ 100g |
| Rated voltage | 6V/12V/24V |
| Tube life | BPT-1000H; S-200H |
| Motor life | ≥800H |

Pump flow

| Item | Flow for reference (ml/min) | | | | | | | | |
|---------------|--|----------|----------|---------|---------|------------|-------------|-------------|---------|
| | SI_1x3 | SI_2x4 | SI_2.5x4 | SI_3x5 | SI_1x3 | SI_1.5x3.5 | BPT_2.5x4.5 | BPT_1.5x3.5 | BPT_2x4 |
| Tube code | SI_1x3 | SI_2x4 | SI_2.5x4 | SI_3x5 | SI_1x3 | SI_1.5x3.5 | BPT_2.5x4.5 | BPT_1.5x3.5 | BPT_2x4 |
| ID x OD (mm) | 1.0x3.0 | 2.0x4.0 | 2.5x4.0 | 3.0x5.0 | 1.0x3.0 | 1.5x3.5 | 2.5x4.5 | 1.5x3.5 | 2x4 |
| Tube material | Silicone tube | | | | | | | BPT | |
| DE/6V-0.6A | 3 | 5 | 24-10-05 | 22 | 36 | 60 | 11 | 25 | 38 |
| DC/12V-0.3A | 24-02-06 | 24-04-05 | 10 | 22 | 37 | 55 | 10 | 22 | 33 |
| DA/24V-0.2A | 2 | 4 | 10 | 21 | 38 | 59 | 11 | 21 | 34 |
| Noise | Under the ambient noise of 35dB, measured at a distance of 50cm ≤ 50dB | | | | | | | | |

The data above was measured in a lab at standard conditions. To be used as reference values only, variations may occur

Article number

Description

| | |
|----------------------------|---|
| DBC-PU-00006-DC6V-C10-SI | Peristaltic Pump, 6V, <90ml/min, white |
| DBC-PU-00006-DC12V-C10-SI | Peristaltic Pump, 12V, <90ml/min, white |
| DBC-PU-00006-DC24V-C10-SI | Peristaltic Pump, 24V, <90ml/min, white |
| DBC-PU-00006-DC6V-C10-BPT | Peristaltic Pump, 6V, <90ml/min, white |
| DBC-PU-00006-DC12V-C10-BPT | Peristaltic Pump, 12V, <90ml/min, white |
| DBC-PU-00006-DC24V-C10-BPT | Peristaltic Pump, 24V, <90ml/min, white |

Peristaltic Pumps Serie: DBC-PU-00007



Features

- 24V stepper motor
- Flow range: ≤ 110 ml/min
- Adaptive luer and clamp Kits
- Planetary friction reduction transmission

Specifications

| Item | Technical Parameters |
|----------------|----------------------|
| Motor type | Stepper motor |
| Flow range | ≤ 110 ml/min |
| Power | 20W |
| Control method | Stepper driver |
| Weight | ≈ 400 g |
| Rated voltage | 24V |
| Tube life | BPT-1000H; S-200H |
| Motor life | ≥ 6000 H |

Pump flow

| Item | Flow for reference (ml/min) | | | | |
|---------------|--|------------|------------|-------------|-------------|
| Tube code | SI_1.6x4.8 | SI_2.4x5.6 | SI_3.2x6.4 | BPT_1.6x4.8 | BPT_2.4x5.6 |
| ID x OD (mm) | 1.6x4.8 | 2.4x5.6 | 3.2x6.4 | 1.6x4.8 | 2.4x5.6 |
| Tube material | Silicone tube | | | BPT | |
| ST/24V: 1.2A | 32 | 70 | 110 | 32 | 70 |
| Speed | 350 RPM | | | | |
| Noise | Under the ambient noise of 35dB, measured at a distance of 50cm ≤ 60 dB | | | | |

The data above was measured in a lab at standard conditions. To be used as reference values only, variations may occur

Article number

DBC-PU-00007-ST24V-C60-SI
DBC-PU-00007-ST24V-C60-BPT

Description

Peristaltic Pump, 24V, < 110 ml/min, blue
Peristaltic Pump, 24V, < 110 ml/min, blue

Peristaltic Pumps Serie: DBC-PU-00008



Features

Stepper/Brush/Brushless DC Motor
 Flow range: ≤ 122 ml/min
 Viscous and non-viscous liquid transfer
 Gear transmission, suitable for various flow sizes

Specifications

| Item | Technical Parameters |
|----------------|---|
| Motor type | DC Brush/DC Brushless/Stepper motor |
| Flow range | ≤ 122 ml/min |
| Power | DC motor: 5W; Stepper motor 10W |
| Control method | Switch Control/Stepper driver |
| Weight | Stepper type ≈ 235 g; DC brushless type ≈ 135 g; DC brushed type ≈ 92 g |
| Rated voltage | 12V/24V |
| Tube life | BPT-1000H; S-200H |
| Motor life | Brush motor ≥ 800 H; brushless motor ≥ 2000 H, stepper motor ≥ 6000 H |

Pump flow

| Item | Flow for reference (ml/min) | | | | | | |
|---------------|--|----------|----------|----------|----------|----------|----------|
| | SI_1x3 | SI_2x4 | SI_3x5 | BPT_1x3 | BPT_2x4 | BPT_3x5 | |
| Tube code | SI_1x3 | SI_2x4 | SI_3x5 | BPT_1x3 | BPT_2x4 | BPT_3x5 | |
| ID x OD (mm) | 1.0x3.0 | 2.0x4.0 | 3.0x5.0 | 1.0x3.0 | 2.0x4.0 | 3.0x5.0 | |
| Tube material | Silicone tube | | | BPT | | | |
| HD 24V & 0.2A | One slowdown | 12 | 65 | 116 | 18 | 56 | 122 |
| HE 12V & 0.4A | Two slowdowns | 24-01-02 | 24-04-05 | 24-08-03 | 24-01-03 | 24-04-03 | 24-08-05 |
| Noise | Under the ambient noise of 35dB, measured at a distance of 50cm ≤ 60 dB | | | | | | |

The data above was measured in a lab at standard conditions. To be used as reference values only, variations may occur

Continues on the next page





| Article number | Description |
|------------------------------|--|
| DBC-PU-00008-DC12V-C51-SI | Peristaltic Pump, 12V, <122ml/min, light red |
| DBC-PU-00008-DC12V-C51-BPT | Peristaltic Pump, 12V, <122ml/min, light red |
| DBC-PU-00008-DC12V-C51-VI | Peristaltic Pump, 12V, <122ml/min, light red |
| DBC-PU-00008-DC24V-C51-SI | Peristaltic Pump, 24V, <122ml/min, light red |
| DBC-PU-00008-DC24V-C51-BPT | Peristaltic Pump, 24V, <122ml/min, light red |
| DBC-PU-00008-DC24V-C51-Vi | Peristaltic Pump, 24V, <122ml/min, light red |
| DBC-PU-00008-DCBL12V-C51-SI | Peristaltic Pump, 12V, <122ml/min, light red |
| DBC-PU-00008-DCBL12V-C51-BPT | Peristaltic Pump, 12V, <122ml/min, light red |
| DBC-PU-00008-DCBL12V-C51-VI | Peristaltic Pump, 12V, <122ml/min, light red |
| DBC-PU-00008-DCBL24V-C51-SI | Peristaltic Pump, 24V, <122ml/min, light red |
| DBC-PU-00008-DCBL24V-C51-BPT | Peristaltic Pump, 24V, <122ml/min, light red |
| DBC-PU-00008-DCBL24V-C51-Vi | Peristaltic Pump, 24V, <122ml/min, light red |
| DBC-PU-00008-ST12V-C51-SI | Peristaltic Pump, 12V, <122ml/min, light red |
| DBC-PU-00008-ST12V-C51-BPT | Peristaltic Pump, 12V, <122ml/min, light red |
| DBC-PU-00008-ST12V-C51-VI | Peristaltic Pump, 12V, <122ml/min, light red |
| DBC-PU-00008-ST24V-C51-SI | Peristaltic Pump, 24V, <122ml/min, light red |
| DBC-PU-00008-ST24V-C51-BPT | Peristaltic Pump, 24V, <122ml/min, light red |
| DBC-PU-00008-ST24V-C51-Vi | Peristaltic Pump, 24V, <122ml/min, light red |
| DBC-PU-00008-DC12V-C41-SI | Peristaltic Pump, 12V, <122ml/min, light green |
| DBC-PU-00008-DC12V-C41-BPT | Peristaltic Pump, 12V, <122ml/min, light green |
| DBC-PU-00008-DC12V-C41-VI | Peristaltic Pump, 12V, <122ml/min, light green |
| DBC-PU-00008-DC24V-C41-SI | Peristaltic Pump, 24V, <122ml/min, light green |
| DBC-PU-00008-DC24V-C41-BPT | Peristaltic Pump, 24V, <122ml/min, light green |
| DBC-PU-00008-DC24V-C41-Vi | Peristaltic Pump, 24V, <122ml/min, light green |
| DBC-PU-00008-DCBL12V-C41-SI | Peristaltic Pump, 12V, <122ml/min, light green |
| DBC-PU-00008-DCBL12V-C41-BPT | Peristaltic Pump, 12V, <122ml/min, light green |
| DBC-PU-00008-DCBL12V-C41-VI | Peristaltic Pump, 12V, <122ml/min, light green |
| DBC-PU-00009-DCBL24V-C41-SI | Peristaltic Pump, 24V, <122ml/min, light green |
| DBC-PU-00008-DCBL24V-C41-BPT | Peristaltic Pump, 24V, <122ml/min, light green |
| DBC-PU-00008-DCBL24V-C41-Vi | Peristaltic Pump, 24V, <122ml/min, light green |
| DBC-PU-00008-ST12V-C41-SI | Peristaltic Pump, 12V, <122ml/min, light green |
| DBC-PU-00008-ST12V-C41-BPT | Peristaltic Pump, 12V, <122ml/min, light green |
| DBC-PU-00008-ST12V-C41-VI | Peristaltic Pump, 12V, <122ml/min, light green |
| DBC-PU-00008-ST24V-C41-SI | Peristaltic Pump, 24V, <122ml/min, light green |
| DBC-PU-00008-ST24V-C41-BPT | Peristaltic Pump, 24V, <122ml/min, light green |



| Article number | Description |
|------------------------------|---|
| DBC-PU-00008-DC12V-C61-SI | Peristaltic Pump, 12V, <122ml/min, light blue |
| DBC-PU-00008-DC12V-C61-BPT | Peristaltic Pump, 12V, <122ml/min, light blue |
| DBC-PU-00008-DC12V-C61-VI | Peristaltic Pump, 12V, <122ml/min, light blue |
| DBC-PU-00008-DC24V-C61-SI | Peristaltic Pump, 24V, <122ml/min, light blue |
| DBC-PU-00008-DC24V-C61-BPT | Peristaltic Pump, 24V, <122ml/min, light blue |
| DBC-PU-00008-DC24V-C61-Vi | Peristaltic Pump, 24V, <122ml/min, light blue |
| DBC-PU-00008-DCBL12V-C61-SI | Peristaltic Pump, 12V, <122ml/min, light blue |
| DBC-PU-00008-DCBL12V-C61-BPT | Peristaltic Pump, 12V, <122ml/min, light blue |
| DBC-PU-00008-DCBL12V-C61-VI | Peristaltic Pump, 12V, <122ml/min, light blue |
| DBC-PU-00008-DCBL24V-C61-SI | Peristaltic Pump, 24V, <122ml/min, light blue |
| DBC-PU-00008-DCBL24V-C61-BPT | Peristaltic Pump, 24V, <122ml/min, light blue |
| DBC-PU-00008-DCBL24V-C61-Vi | Peristaltic Pump, 24V, <122ml/min, light blue |
| DBC-PU-00008-ST12V-C61-SI | Peristaltic Pump, 12V, <122ml/min, light blue |
| DBC-PU-00008-ST12V-C61-BPT | Peristaltic Pump, 12V, <122ml/min, light blue |
| DBC-PU-00008-ST12V-C61-VI | Peristaltic Pump, 12V, <122ml/min, light blue |
| DBC-PU-00008-ST24V-C61-SI | Peristaltic Pump, 24V, <122ml/min, light blue |
| DBC-PU-00008-ST24V-C61-BPT | Peristaltic Pump, 24V, <122ml/min, light blue |
| DBC-PU-00008-ST24V-C61-Vi | Peristaltic Pump, 24V, <122ml/min, light blue |
| DBC-PU-00008-DC12V-C71-SI | Peristaltic Pump, 12V, <122ml/min, light yellow |
| DBC-PU-00008-DC12V-C71-BPT | Peristaltic Pump, 12V, <122ml/min, light yellow |
| DBC-PU-00008-DC12V-C71-VI | Peristaltic Pump, 12V, <122ml/min, light yellow |
| DBC-PU-00008-DC24V-C71-SI | Peristaltic Pump, 24V, <122ml/min, light yellow |
| DBC-PU-00008-DC24V-C71-BPT | Peristaltic Pump, 24V, <122ml/min, light yellow |
| DBC-PU-00008-DC24V-C71-Vi | Peristaltic Pump, 24V, <122ml/min, light yellow |
| DBC-PU-00008-DCBL12V-C71-SI | Peristaltic Pump, 12V, <122ml/min, light yellow |
| DBC-PU-00008-DCBL12V-C71-BPT | Peristaltic Pump, 12V, <122ml/min, light yellow |
| DBC-PU-00008-DCBL12V-C71-VI | Peristaltic Pump, 12V, <122ml/min, light yellow |
| DBC-PU-00008-DCBL24V-C71-SI | Peristaltic Pump, 24V, <122ml/min, light yellow |
| DBC-PU-00008-DCBL24V-C71-BPT | Peristaltic Pump, 24V, <122ml/min, light yellow |
| DBC-PU-00008-DCBL24V-C71-Vi | Peristaltic Pump, 24V, <122ml/min, light yellow |
| DBC-PU-00008-ST12V-C71-SI | Peristaltic Pump, 12V, <122ml/min, light yellow |
| DBC-PU-00008-ST12V-C71-BPT | Peristaltic Pump, 12V, <122ml/min, light yellow |
| DBC-PU-00008-ST12V-C71-VI | Peristaltic Pump, 12V, <122ml/min, light yellow |
| DBC-PU-00008-ST24V-C71-SI | Peristaltic Pump, 24V, <122ml/min, light yellow |

Peristaltic Pumps Serie: DBC-PU-00009



Features

12V/24V DC brushed motor
Flow range: ≤ 260 ml/min
Suitable for intermittent work
Simple structure, large flow

Specifications

| Item | Technical Parameters |
|----------------|----------------------|
| Motor type | DC brush motor |
| Flow range | ≤ 300 ml/min |
| Power | 9W |
| Control method | Switch control |
| Weight | ≈ 215 g |
| Rated voltage | 12V/24V |
| Tube life | N-1000H |
| Motor life | ≥ 1000 H |

Pump flow

| Item | Flow for reference (ml/min) | |
|---------------|--|------------|
| Tube code | NO_2.4x5.6 | NO_3.2x6.4 |
| ID x OD (mm) | 2.4x5.6 | 3.2x6.4 |
| Tube material | Norprene | |
| 12V-0.75A | 90 | 150 |
| 24V-0.35A | 100 | 170 |
| Noise | Under the ambient noise of 35dB, measured at a distance of 50cm ≤ 65 dB | |

The data above was measured in a lab at standard conditions. To be used as reference values only, variations may occur

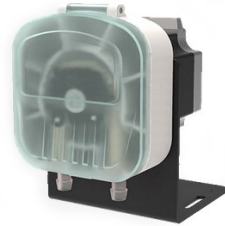
Article number

DBC-PU-00009-DC12V-C20
DBC-PU-00009-DC24V-C20

Description

Peristaltic Pump, 12V, < 300 ml/min, black
Peristaltic Pump, 24V, < 300 ml/min, black

Peristaltic Pumps Serie: DBC-PU-00010



Features

- Stepper/synchronous/brush motor
- Flow range: < 400ml/min
- 24V/12V and C220V options
- Transferable liquids containing particles

Specifications

| Item | Technical Parameters |
|----------------|--|
| Motor type | DC brush motor/Stepper motor/Synchronous motor |
| Flow range | ≤ 400 ml/min |
| Power | Brush 12W / Stepper 24W / Synchronous motor 18W |
| Control method | Switch Control/drive board control |
| Weight | DC brush motor ≈ 758g / Stepper motor ≈ 937g / Synchronous motor ≈ 830g |
| Rated voltage | 12V/24V/220V |
| Tube life | S-200H/ BPT-1000H/ N-1000H |
| Motor life | DC brush motor ≥ 800H / Stepper motor ≥ 6000H / Synchronous motor ≥ 800H |

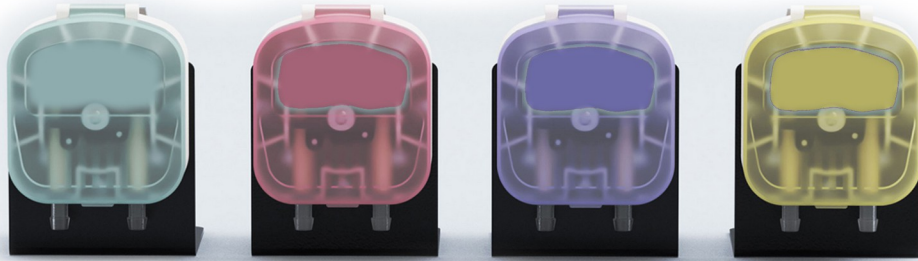
Pump flow

| Item | Flow for reference (ml/min) | | | | | | |
|------------------|--|----------|-------------|-----------|------------|----------|-----|
| | SI_3.2x6.4 | SI_4x7.2 | BPT_3.2x6.4 | BPT_4x7.2 | NO_3.2x6.4 | NO_4x7.2 | |
| Tube code | SI_3.2x6.4 | SI_4x7.2 | BPT_3.2x6.4 | BPT_4x7.2 | NO_3.2x6.4 | NO_4x7.2 | |
| ID x OD (mm) | 3.2x6.4 | 4.0x7.2 | 3.2x6.4 | 4.0x7.2 | 3.2x6.4 | 4.0x7.2 | |
| Tube material | Silicone | | BPT | | Norprene | | |
| Brush | FE-12V 0.8A | 220 | 330 | 230 | 330 | 230 | 330 |
| | FC-24V 0.45A | 240 | 360 | 240 | 380 | 240 | 380 |
| Stepper (400RPM) | 240 | 380 | 265 | 400 | 265 | 400 | |
| Synchronous | 64 | 90 | 68 | 105 | 68 | 105 | |
| Noise | Under the ambient noise of 35dB, measured at a distance of 50cm ≤ 65dB | | | | | | |

The data above was measured in a lab at standard conditions. To be used as reference values only, variations may occur

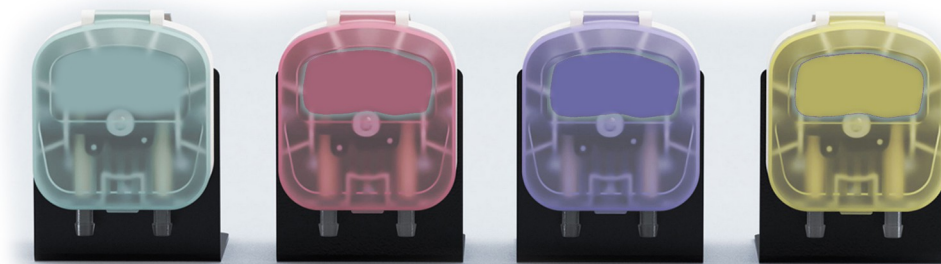
Continues on the next page





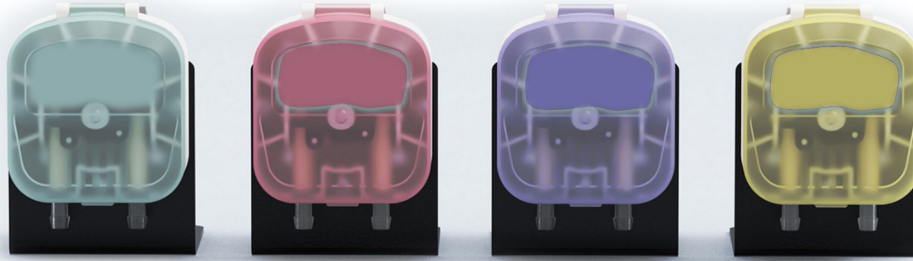
Yellow pumps

| Article number | Description |
|-------------------------------------|---|
| DBC-PU-00010-DC12V-C70-SI_3.2x6.4 | Peristaltic pump, 12V DC, Yellow |
| DBC-PU-00010-DC12V-C70-SI_4x7.2 | Peristaltic pump, 12V DC, Yellow |
| DBC-PU-00010-DC12V-C70-BPT_3.2x6.4 | Peristaltic pump, 12V DC, Yellow |
| DBC-PU-00010-DC12V-C70-BPT_4x7.2 | Peristaltic pump, 12V DC, Yellow |
| DBC-PU-00010-DC12V-C70-NO_3.2x6.4 | Peristaltic pump, 12V DC, Yellow |
| DBC-PU-00010-DC12V-C70-NO_4x7.2 | Peristaltic pump, 12V DC, Yellow |
| DBC-PU-00010-DC24V-C70-SI_3.2x6.4 | Peristaltic pump, 24V DC, Yellow |
| DBC-PU-00010-DC24V-C70-SI_4x7.2 | Peristaltic pump, 24V DC, Yellow |
| DBC-PU-00010-DC24V-C70-BPT_3.2x6.4 | Peristaltic pump, 24V DC, Yellow |
| DBC-PU-00010-DC24V-C70-BPT_4x7.2 | Peristaltic pump, 24V DC, Yellow |
| DBC-PU-00010-DC24V-C70-NO_3.2x6.4 | Peristaltic pump, 24V DC, Yellow |
| DBC-PU-00010-DC24V-C70-NO_4x7.2 | Peristaltic pump, 24V DC, Yellow |
| DBC-PU-00010-AC220V-C70-SI_3.2x6.4 | Peristaltic pump, 120V AC Synchronous, Yellow |
| DBC-PU-00010-AC220V-C70-SI_4x7.2 | Peristaltic pump, 120V AC Synchronous, Yellow |
| DBC-PU-00010-AC220V-C70-BPT_3.2x6.4 | Peristaltic pump, 120V AC Synchronous, Yellow |
| DBC-PU-00010-AC220V-C70-BPT_4x7.2 | Peristaltic pump, 120V AC Synchronous, Yellow |
| DBC-PU-00010-AC220V-C70-NO_3.2x6.4 | Peristaltic pump, 120V AC Synchronous, Yellow |
| DBC-PU-00010-AC220V-C70-NO_4x7.2 | Peristaltic pump, 120V AC Synchronous, Yellow |
| DBC-PU-00010-ST12V-C70-SI_3.2x6.4 | Peristaltic pump, 12V Stepper, Yellow |
| DBC-PU-00010-ST12V-C70-SI_4x7.2 | Peristaltic pump, 12V Stepper, Yellow |
| DBC-PU-00010-ST12V-C70-BPT_3.2x6.4 | Peristaltic pump, 12V Stepper, Yellow |
| DBC-PU-00010-ST12V-C70-BPT_4x7.2 | Peristaltic pump, 12V Stepper, Yellow |
| DBC-PU-00010-ST12V-C70-NO_3.2x6.4 | Peristaltic pump, 12V Stepper, Yellow |
| DBC-PU-00010-ST12V-C70-NO_4x7.2 | Peristaltic pump, 12V Stepper, Yellow |
| DBC-PU-00010-ST24V-C70-SI_3.2x6.4 | Peristaltic pump, 24V Stepper, Yellow |
| DBC-PU-00010-ST24V-C70-SI_4x7.2 | Peristaltic pump, 24V Stepper, Yellow |
| DBC-PU-00010-ST24V-C70-BPT_3.2x6.4 | Peristaltic pump, 24V Stepper, Yellow |
| DBC-PU-00010-ST24V-C70-BPT_4x7.2 | Peristaltic pump, 24V Stepper, Yellow |
| DBC-PU-00010-ST24V-C70-NO_3.2x6.4 | Peristaltic pump, 24V Stepper, Yellow |
| DBC-PU-00010-ST24V-C70-NO_4x7.2 | Peristaltic pump, 24V Stepper, Yellow |



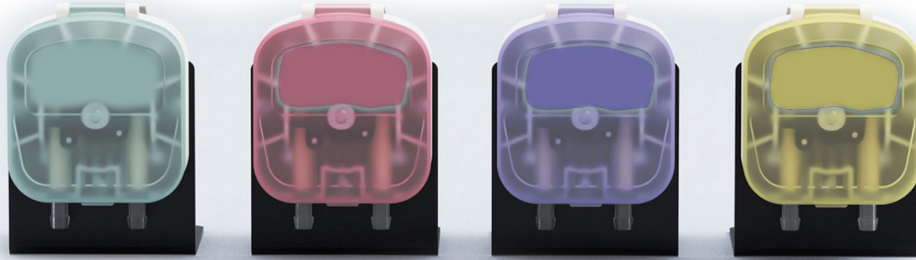
Blue pumps

| Article number | Description |
|-------------------------------------|---|
| DBC-PU-00010-DC12V-C60-SI_3.2x6.4 | Peristaltic pump, 12V DC, Blue |
| DBC-PU-00010-DC12V-C60-SI_4x7.2 | Peristaltic pump, 12V DC, Blue |
| DBC-PU-00010-DC12V-C60-BPT_3.2x6.4 | Peristaltic pump, 12V DC, Blue |
| DBC-PU-00010-DC12V-C60-BPT_4x7.2 | Peristaltic pump, 12V DC, Blue |
| DBC-PU-00010-DC12V-C60-NO_3.2x6.4 | Peristaltic pump, 12V DC, Blue |
| DBC-PU-00010-DC12V-C60-NO_4x7.2 | Peristaltic pump, 12V DC, Blue |
| DBC-PU-00010-DC24V-C60-SI_3.2x6.4 | Peristaltic pump, 24V DC, Blue |
| DBC-PU-00010-DC24V-C60-SI_4x7.2 | Peristaltic pump, 24V DC, Blue |
| DBC-PU-00010-DC24V-C60-BPT_3.2x6.4 | Peristaltic pump, 24V DC, Blue |
| DBC-PU-00010-DC24V-C60-BPT_4x7.2 | Peristaltic pump, 24V DC, Blue |
| DBC-PU-00010-DC24V-C60-NO_3.2x6.4 | Peristaltic pump, 24V DC, Blue |
| DBC-PU-00010-DC24V-C60-NO_4x7.2 | Peristaltic pump, 24V DC, Blue |
| DBC-PU-00010-AC220V-C60-SI_3.2x6.4 | Peristaltic pump, 120V AC Synchronous, Blue |
| DBC-PU-00010-AC220V-C60-SI_4x7.2 | Peristaltic pump, 120V AC Synchronous, Blue |
| DBC-PU-00010-AC220V-C60-BPT_3.2x6.4 | Peristaltic pump, 120V AC Synchronous, Blue |
| DBC-PU-00010-AC220V-C60-BPT_4x7.2 | Peristaltic pump, 120V AC Synchronous, Blue |
| DBC-PU-00010-AC220V-C60-NO_3.2x6.4 | Peristaltic pump, 120V AC Synchronous, Blue |
| DBC-PU-00010-AC220V-C60-NO_4x7.2 | Peristaltic pump, 120V AC Synchronous, Blue |
| DBC-PU-00010-ST12V-C60-SI_3.2x6.4 | Peristaltic pump, 12V Stepper, Blue |
| DBC-PU-00010-ST12V-C60-SI_4x7.2 | Peristaltic pump, 12V Stepper, Blue |
| DBC-PU-00010-ST12V-C60-BPT_3.2x6.4 | Peristaltic pump, 12V Stepper, Blue |
| DBC-PU-00010-ST12V-C60-BPT_4x7.2 | Peristaltic pump, 12V Stepper, Blue |
| DBC-PU-00010-ST12V-C60-NO_3.2x6.4 | Peristaltic pump, 12V Stepper, Blue |
| DBC-PU-00010-ST12V-C60-NO_4x7.2 | Peristaltic pump, 12V Stepper, Blue |
| DBC-PU-00010-ST24V-C60-SI_3.2x6.4 | Peristaltic pump, 24V Stepper, Blue |
| DBC-PU-00010-ST24V-C60-SI_4x7.2 | Peristaltic pump, 24V Stepper, Blue |
| DBC-PU-00010-ST24V-C60-BPT_3.2x6.4 | Peristaltic pump, 24V Stepper, Blue |
| DBC-PU-00010-ST24V-C60-BPT_4x7.2 | Peristaltic pump, 24V Stepper, Blue |
| DBC-PU-00010-ST24V-C60-NO_3.2x6.4 | Peristaltic pump, 24V Stepper, Blue |



Red pumps

| Article number | Description |
|-------------------------------------|--|
| DBC-PU-00010-DC12V-C50-SI_3.2x6.4 | Peristaltic pump, 12V DC, Red |
| DBC-PU-00010-DC12V-C50-SI_4x7.2 | Peristaltic pump, 12V DC, Red |
| DBC-PU-00010-DC12V-C50-BPT_3.2x6.4 | Peristaltic pump, 12V DC, Red |
| DBC-PU-00010-DC12V-C50-BPT_4x7.2 | Peristaltic pump, 12V DC, Red |
| DBC-PU-00010-DC12V-C50-NO_3.2x6.4 | Peristaltic pump, 12V DC, Red |
| DBC-PU-00010-DC12V-C50-NO_4x7.2 | Peristaltic pump, 12V DC, Red |
| DBC-PU-00010-DC24V-C50-SI_3.2x6.4 | Peristaltic pump, 24V DC, Red |
| DBC-PU-00010-DC24V-C50-SI_4x7.2 | Peristaltic pump, 24V DC, Red |
| DBC-PU-00010-DC24V-C50-BPT_3.2x6.4 | Peristaltic pump, 24V DC, Red |
| DBC-PU-00010-DC24V-C50-BPT_4x7.2 | Peristaltic pump, 24V DC, Red |
| DBC-PU-00010-DC24V-C50-NO_3.2x6.4 | Peristaltic pump, 24V DC, Red |
| DBC-PU-00010-DC24V-C50-NO_4x7.2 | Peristaltic pump, 24V DC, Red |
| DBC-PU-00010-AC220V-C50-SI_3.2x6.4 | Peristaltic pump, 120V AC Synchronous, Red |
| DBC-PU-00010-AC220V-C50-SI_4x7.2 | Peristaltic pump, 120V AC Synchronous, Red |
| DBC-PU-00010-AC220V-C50-BPT_3.2x6.4 | Peristaltic pump, 120V AC Synchronous, Red |
| DBC-PU-00010-AC220V-C50-BPT_4x7.2 | Peristaltic pump, 120V AC Synchronous, Red |
| DBC-PU-00010-AC220V-C50-NO_3.2x6.4 | Peristaltic pump, 120V AC Synchronous, Red |
| DBC-PU-00010-AC220V-C50-NO_4x7.2 | Peristaltic pump, 120V AC Synchronous, Red |
| DBC-PU-00010-ST12V-C50-SI_3.2x6.4 | Peristaltic pump, 12V Stepper, Red |
| DBC-PU-00010-ST12V-C50-SI_4x7.2 | Peristaltic pump, 12V Stepper, Red |
| DBC-PU-00010-ST12V-C50-BPT_3.2x6.4 | Peristaltic pump, 12V Stepper, Red |
| DBC-PU-00010-ST12V-C50-BPT_4x7.2 | Peristaltic pump, 12V Stepper, Red |
| DBC-PU-00010-ST12V-C50-NO_3.2x6.4 | Peristaltic pump, 12V Stepper, Red |
| DBC-PU-00010-ST12V-C50-NO_4x7.2 | Peristaltic pump, 12V Stepper, Red |
| DBC-PU-00010-ST24V-C50-SI_3.2x6.4 | Peristaltic pump, 24V Stepper, Red |
| DBC-PU-00010-ST24V-C50-SI_4x7.2 | Peristaltic pump, 24V Stepper, Red |
| DBC-PU-00010-ST24V-C50-BPT_3.2x6.4 | Peristaltic pump, 24V Stepper, Red |
| DBC-PU-00010-ST24V-C50-BPT_4x7.2 | Peristaltic pump, 24V Stepper, Red |
| DBC-PU-00010-ST24V-C50-NO_3.2x6.4 | Peristaltic pump, 24V Stepper, Red |



Green pumps

| Article number | Description |
|-------------------------------------|--|
| DBC-PU-00010-DC12V-C40-SI_3.2x6.4 | Peristaltic pump, 12V DC, Green |
| DBC-PU-00010-DC12V-C40-SI_4x7.2 | Peristaltic pump, 12V DC, Green |
| DBC-PU-00010-DC12V-C40-BPT_3.2x6.4 | Peristaltic pump, 12V DC, Green |
| DBC-PU-00010-DC12V-C40-BPT_4x7.2 | Peristaltic pump, 12V DC, Green |
| DBC-PU-00010-DC12V-C40-NO_3.2x6.4 | Peristaltic pump, 12V DC, Green |
| DBC-PU-00010-DC12V-C40-NO_4x7.2 | Peristaltic pump, 12V DC, Green |
| DBC-PU-00010-DC24V-C40-SI_3.2x6.4 | Peristaltic pump, 24V DC, Green |
| DBC-PU-00010-DC24V-C40-SI_4x7.2 | Peristaltic pump, 24V DC, Green |
| DBC-PU-00010-DC24V-C40-BPT_3.2x6.4 | Peristaltic pump, 24V DC, Green |
| DBC-PU-00010-DC24V-C40-BPT_4x7.2 | Peristaltic pump, 24V DC, Green |
| DBC-PU-00010-DC24V-C40-NO_3.2x6.4 | Peristaltic pump, 24V DC, Green |
| DBC-PU-00010-DC24V-C40-NO_4x7.2 | Peristaltic pump, 24V DC, Green |
| DBC-PU-00010-AC220V-C40-SI_3.2x6.4 | Peristaltic pump, 120V AC Synchronous, Green |
| DBC-PU-00010-AC220V-C40-SI_4x7.2 | Peristaltic pump, 120V AC Synchronous, Green |
| DBC-PU-00010-AC220V-C40-BPT_3.2x6.4 | Peristaltic pump, 120V AC Synchronous, Green |
| DBC-PU-00010-AC220V-C40-BPT_4x7.2 | Peristaltic pump, 120V AC Synchronous, Green |
| DBC-PU-00010-AC220V-C40-NO_3.2x6.4 | Peristaltic pump, 120V AC Synchronous, Green |
| DBC-PU-00010-AC220V-C40-NO_4x7.2 | Peristaltic pump, 120V AC Synchronous, Green |
| DBC-PU-00010-ST12V-C40-SI_3.2x6.4 | Peristaltic pump, 12V Stepper, Green |
| DBC-PU-00010-ST12V-C40-SI_4x7.2 | Peristaltic pump, 12V Stepper, Green |
| DBC-PU-00010-ST12V-C40-BPT_3.2x6.4 | Peristaltic pump, 12V Stepper, Green |
| DBC-PU-00010-ST12V-C40-BPT_4x7.2 | Peristaltic pump, 12V Stepper, Green |
| DBC-PU-00010-ST12V-C40-NO_3.2x6.4 | Peristaltic pump, 12V Stepper, Green |
| DBC-PU-00010-ST12V-C40-NO_4x7.2 | Peristaltic pump, 12V Stepper, Green |
| DBC-PU-00010-ST24V-C40-SI_3.2x6.4 | Peristaltic pump, 24V Stepper, Green |
| DBC-PU-00010-ST24V-C40-SI_4x7.2 | Peristaltic pump, 24V Stepper, Green |
| DBC-PU-00010-ST24V-C40-BPT_3.2x6.4 | Peristaltic pump, 24V Stepper, Green |
| DBC-PU-00010-ST24V-C40-BPT_4x7.2 | Peristaltic pump, 24V Stepper, Green |
| DBC-PU-00010-ST24V-C40-NO_3.2x6.4 | Peristaltic pump, 24V Stepper, Green |